

Small Signal Product

1A, 100V - 1000V Surface Mount Rectifiers
FEATURES

- Glass passivated devices
- Ideal for surface mounted applications
- Low leakage current
- Metallurgical bonded construction
- Compliant to RoHS Directive 2011/65/EU and in accordance to WEEE 2002/96/EC
- Halogen-free according to IEC 61249-2-21
- Packing code with suffix "G" means green compound (halogen-free)


SOD-123FL

MECHANICAL DATA

- Case: JEDEC SOD-123FL, molded plastic over passivated chip
- Terminals: Solder Plated, solderable per MIL-STD-750, Method 2026
- Weight: 21 ± 0.5mg

MAXIMUM RATINGS AND ELECTRICAL CHARACTERISTICS (T _A =25°C unless otherwise noted)								
PARAMETER	SYMBOL	TSOD1F 1HM	TSOD1F 2HM	TSOD1F 4HM	TSOD1F 6HM	TSOD1F 8HM	TSOD1F 10HM	UNIT
Device marking code		FB	FD	FG	FJ	FK	FM	
Maximum recurrent peak reverse voltage	V _{RRM}	100	200	400	600	800	1000	V
Maximum RMS voltage	V _{RMS}	70	140	280	420	560	700	V
Maximum DC blocking voltage	V _{DC}	100	200	400	600	800	1000	V
Maximum average forward rectified current (Note 1)	I _(AV)	1						A
Peak forward surge current 8.3ms single half sine wave superimposed on rated load	I _{FSM}	25						A
Maximum instantaneous forward voltage at 1A (Note 2)	V _F	1.3						V
Maximum DC reverse current at rated DC blocking voltage	I _R	5						μA
		50						
Maximum reverse recovery time (Note 3)	t _{rr}	150		250		500		ns
Typical junction capacitance (Note 4)	C _J	4						pF
Typical thermal resistance (Note 5)	R _{θJA}	180						K/W
Junction and Storage Temperature Range	T _J , T _{STG}	-55 to +150						°C

Note 1: Averaged over any 20ms period.

Note 2: Pulse test: 300μs pulse width, 1% duty cycle.

 Note 3: Measured with I_F=0.5A, I_R=1A, I_{rr}=0.25A

Note 4: Measured at 1.0MHz and applied average voltage of 4.0V DC.

 Note 5: Thermal resistance junction to ambient, 6.0 mm² copper pads to each terminal.

Small Signal Product

RATINGS AND CHARACTERISTICS CURVES

($T_A=25^{\circ}\text{C}$ unless otherwise noted)

Fig. 1 FORWARD DERATING CURVE

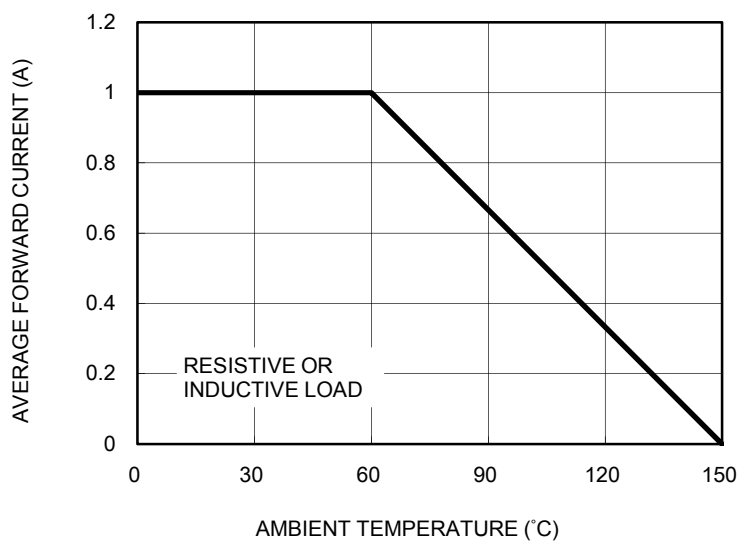


Fig. 2 TYPICAL FORWARD CHARACTERISTICS

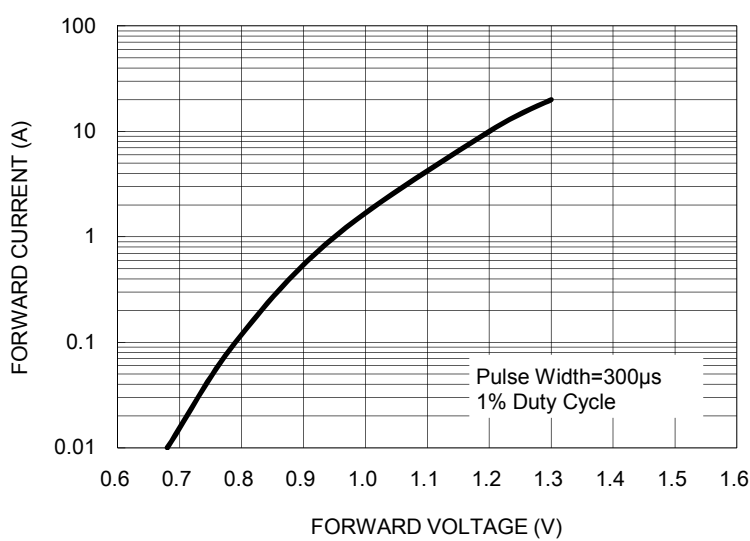


Fig. 3 TYPICAL REVERSE CHARACTERISTICS

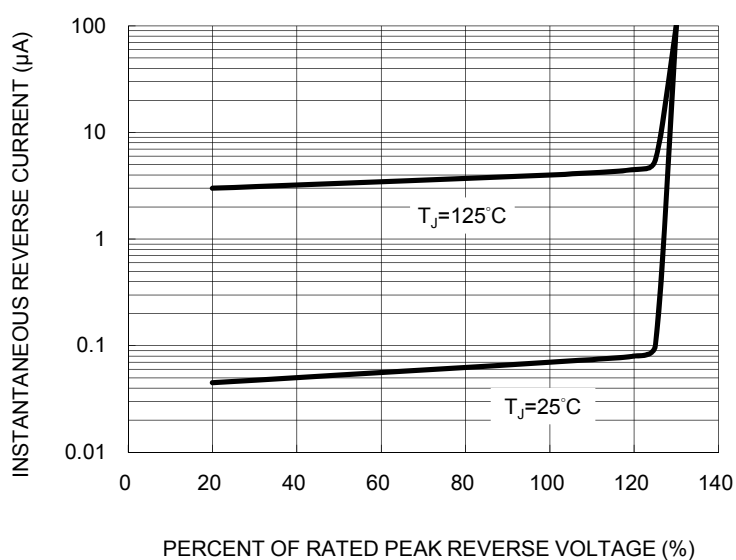
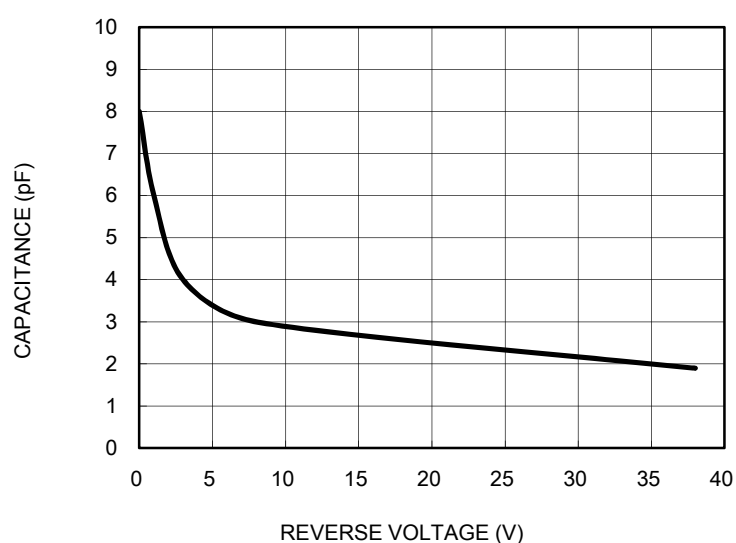


Fig. 4 TYPICAL JUNCTION CAPACITANCE



Small Signal Product

ORDERING INFORMATION

PART NO.	PACKING CODE	PACKING CODE SUFFIX	PACKAGE	PACKING
TSOD1FxHM (Note 1, 2)	R4	G	SOD-123FL	10,000 / 13" reel

Note 1: "x" defines voltage from 100V (TSOD1F1HM) to 1000V (TSOD1F10HM)

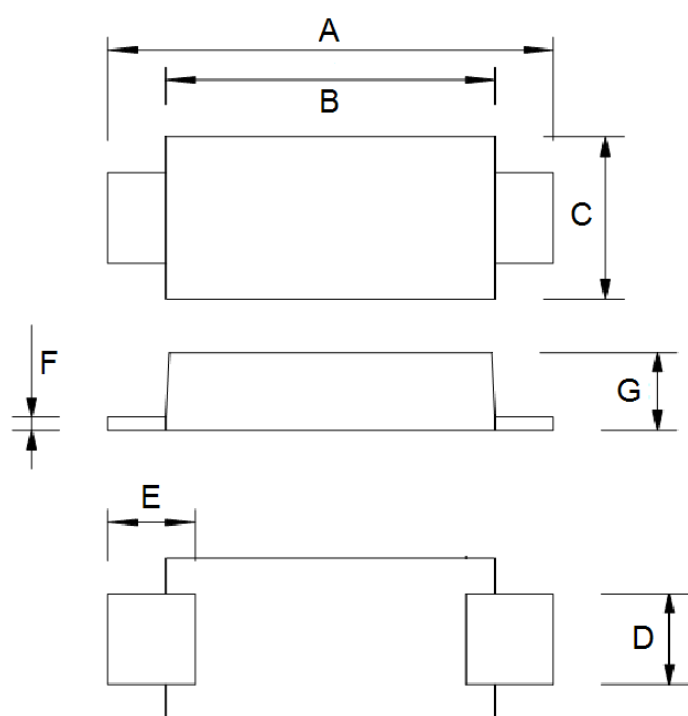
Note 2: Whole series with green compound

EXAMPLE

PREFERRED P/N	PART NO.	PACKING CODE	PACKING CODE SUFFIX	DESCRIPTION
TSOD1F1HM R4G	TSOD1F1HM	R4	G	Green compound

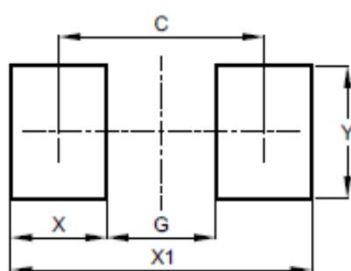
PACKAGE OUTLINE DIMENSIONS

SOD-123FL



DIM.	Unit (mm)		Unit (inch)	
	Min	Max	Min	Max
A	3.45	3.95	0.136	0.156
B	2.60	3.00	0.102	0.118
C	1.70	2.10	0.067	0.083
D	0.80	1.15	0.031	0.045
E	0.30	0.90	0.012	0.035
F	0.10	0.30	0.004	0.012
G	0.88	1.35	0.035	0.053

SUGGEST PAD LAYOUT



DIM.	Unit (mm)	Unit (inch)
	Typ.	Typ.
C	4.00	0.157
G	3.00	0.118
X	1.20	0.047
X1	4.90	0.193
Y	1.20	0.047

Small Signal Product

Notice

Specifications of the products displayed herein are subject to change without notice. TSC or anyone on its behalf, assumes no responsibility or liability for any errors or inaccuracies.

Information contained herein is intended to provide a product description only. No license, express or implied, to any intellectual property rights is granted by this document. Except as provided in TSC's terms and conditions of sale for such products, TSC assumes no liability whatsoever, and disclaims any express or implied warranty, relating to sale and/or use of TSC products including liability or warranties relating to fitness for a particular purpose, merchantability, or infringement of any patent, copyright, or other intellectual property right.

The products shown herein are not designed for use in medical, life-saving, or life-sustaining applications. Customers using or selling these products for use in such applications do so at their own risk and agree to fully indemnify TSC for any damages resulting from such improper use or sale.